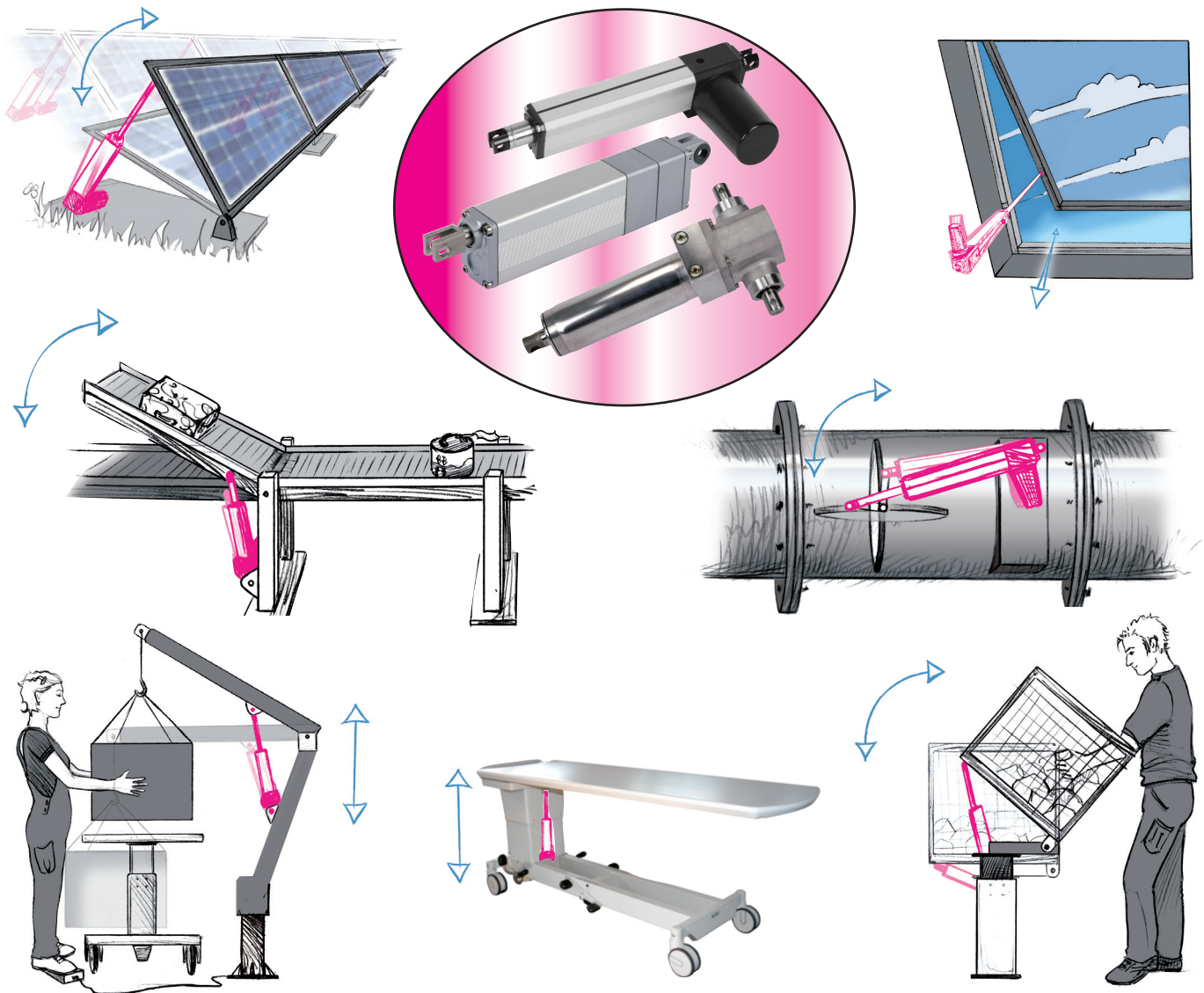


Linear Actuators For Motion Control

CONTROL, ADJUST AND MOVE WITH YOUR CHOICE
OF ELECTRIC OR HYDRAULIC LINEAR ACTUATORS



See Assembly Products at: **www.roemheld-usa.com**

927 Horan Drive • Fenton, MO 63026
Phone (636) 386-8022 • Fax (636) 386-8034
Email info@clrh.com • roemheld-usa.com

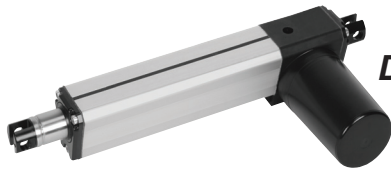


ROEMHELD

HILMA ■ STARK

Carr Lane Roemheld Mfg. Co.

Linear Actuators: Your Choice of Electric or Hydraulic

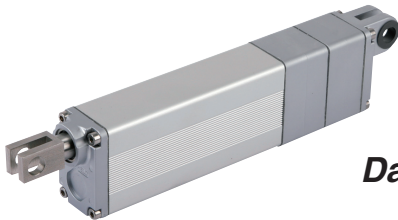


RA 600

Data Sheet L1.101

24 V DC (or 12 V DC)

- Max. force 1 to 6 kN (225 to 1350 lbs.)
- Stroke 100 to 600 mm (3.9 to 23.6 in.)
- Limit switches or measuring system
- IP66 or IP69K

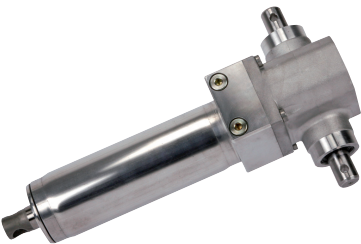


RA 60

Data Sheet L4.201

12 V DC (or 24 V DC)

- Max. force 0.3 or 0.6 kN (67 or 135 lbs.)
- Stroke 100 to 200 mm (3.9 to 7.8 in.)
- Limit switches or measuring system
- IP69K



RH 1250

Data Sheet L7.101

Manually Actuated

- Max. force 4.5 to 12.5 kN (1012 to 2810 lbs.)
- Stroke 140 to 250 mm (5.5 to 9.8 in.) (special up to 600 mm, or 23.6 in.)
- One lever actuation

RA Electric Linear Actuators: Based on their easy control and high performance, the application possibilities of RA linear actuators are limitless.

From easy adjustment of components such as lids or levers, controlling adjustment processes of all sorts to lifting and moving of heavy and light loads – the RA linear actuators reliably serve their purpose indoors and in harsh outdoor environments.

RA linear actuators also can bear vibrations and shocks, so that they are also ideal for the use in vehicles. They can be used for the adjustment of loading devices of road vehicles or for the operation of heavy work facilities of agricultural machines and construction vehicles.

RH Hydraulic Linear Actuators: This drive is particularly robust and designed for a long service life. Due to new coating systems, it meets the current requirements of cleaning and disinfection in hospitals.

Carr Lane Roemheld recommends its customers to seek consultation at an early stage because customized solutions can be offered upon request. One of the latest innovations is an antimagnetic model for applications in magnetic resonance therapy.

These actuators are primarily used in mobile applications which need to operate reliably and everywhere without any power supply, such as hospital beds, therapy beds or instrument tables. They are especially used for comfortable height adjustment; nursing staff may change the bed height easily and conveniently using a foot or hand lever.



Linear Actuators Provide Upgraded Quality to Activity Chair, at Lower Price

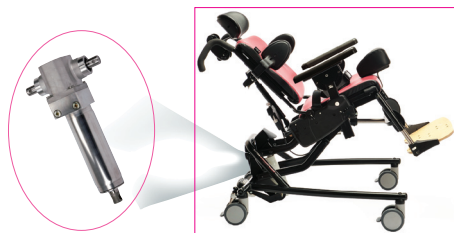
Challenge: Rifton Equipment designed, and brought to market, a new seating system called the Activity Chair. One of the required features was a base that allowed height adjustment with a 225-lb client in the chair. This was accomplished by use of a foot-operated hydraulic pump. The previous supplier provided a pump that functioned well, but when it proved costly, was reluctant to work with Rifton to economize. Rifton felt it was important to reduce costs on the chair where possible.

Solution: Rifton turned to linear actuators from Carr Lane Roemheld. After acquiring samples, and submitting them to an exhaustive validation/testing process, Rifton determined that the new product was actually an upgrade in quality on several fronts.

Carr Lane Roemheld saved Rifton a significant amount of money, and provided some minor design modifications to meet their requirements, including custom packaging specifications.

Need for cost control, while retaining quality

Rifton's new Activity Chair is designed for feeding, speech therapy, active learning, and for clients with sensory processing challenges. "One of the required features was a base that allowed height adjustment with a 225-lb client in the chair," said Kirk Wareham, Rifton's Director of Product Design. This was accomplished by use of a foot-operated hydraulic pump. While the pump from the original supplier functioned well, it was quite costly. "We felt it was only responsible to reduce our costs where possible, and ask for a price reduction commensurate with the dramatically rising sales of the Activity Chair," said Wareham about the original supplier. "Also, since we are able to pay our bills promptly we typically request, and are typically granted, an early-pay discount. Communication is vital to a thriving and mutually beneficial relationship, and we were disappointed to find that the supplier would not even entertain a discussion on either point. There were also some minor quality issues. An additional driver of the project was the hope



to reduce the amount of inventory being held in our warehouse."

Carr Lane Roemheld's linear actuators fit the bill

Rifton then researched others in the field, and found that linear actuators from Carr Lane Roemheld were comparable to the original design. "After acquiring samples, and submitting them to an exhaustive validation/testing process, we determined that the new product was actually an upgrade on several fronts," said Wareham. "Prior to making a final decision, we then paid a visit to the Carr Lane Roemheld facility in Fenton, Missouri, in the hopes of establishing a strong and long-term relationship."

Wareham continued to find benefits to the new partnership. "Carr Lane Roemheld offered a price that would save us a significant amount of money. They also made some minor design modifications to meet our requirements, including custom packaging specifications. Our designers felt that the Carr Lane Roemheld pump was actually an upgrade in quality. Because Carr Lane Roemheld agreed to hold stock for us, and to deliver on a one-week lead time, we were able to reduce our inventory by over \$100,000. We also received a visit from an engineer from the manufacturing plant in Germany, to review quality expectations and design features; this was very helpful. Carr Lane Roemheld also offered us an early-pay discount. Although there was a minor problem with the first order, they stood behind their product and resolved the issue for us in a timely fashion."

The bottom line? "I would certainly highly recommend Carr Lane Roemheld as a valued supplier to any business," Wareham said.



A linear actuator from Carr Lane Roemheld was built in to the base of the chair to allow height adjustment. The chair is designed for ease in therapy, feeding and other activities, with a client weight up to 225 lbs.



Linear Actuators For Motion Control



RH 1250:
Massage/
physical
therapy table

RH 1250: Adjustment
of seat height



RH 1250: Scissor lift



RA 60: Adjustment of
dosing and delivery point



RA 600: Pressure
vessels, cooking
vessels, reactors,
fermentor, etc.



Find us on
Facebook

facebook.com/CarrLaneRoemheld



linkedin.com/company/carr-lane-roemheld



youtube.com/carrlaneroemheld



instagram.com/carrlaneroemheld

Other Products From Carr Lane Roemheld



- Modular Units for Assembly
- Power Workholding Devices
- CNC Machining Center Vises
- Quick Die Change for Stamping
- Quick Mold Change for Plastics and Rubber

For more information, view ASSEMBLY at:
www.roemheld-usa.com



ROEMHELD
HILMA ■ STARK

Carr Lane Roemheld Mfg. Co.

Linear Actuators
11/19

Carr Lane Roemheld Mfg. Co.
(636) 386-8022 • roemheld-usa.com