

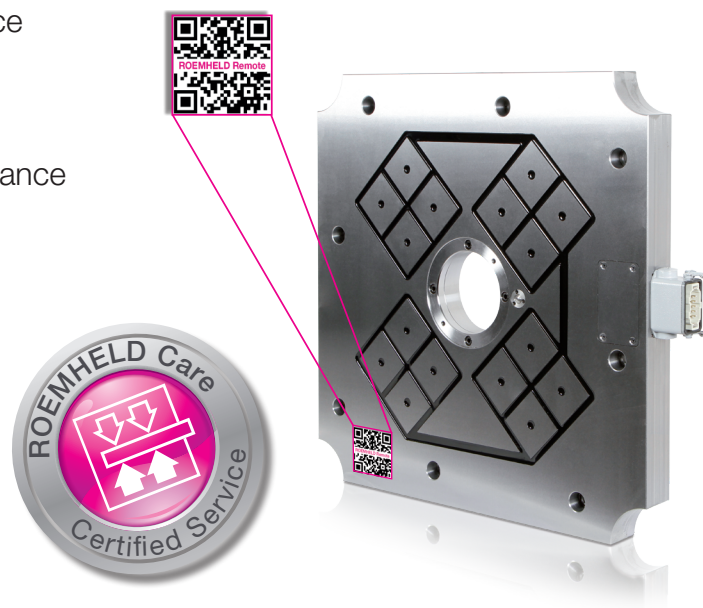


ROEMHELD Care is a comprehensive maintenance package that ensures the performance of your equipment and actively protects your assets.

Our maintenance contracts offer different maintenance levels for individual customer requirements.

Advantages

- Adherence to standards due to statutory tests
- No hidden costs because working time, travel time and travel expenses included
- The fixed price makes maintenance and operating costs predictable
- A ROEMHELD maintenance package ensures uncomplicated assistance and minimises unplanned downtimes



ROEMHELD Check-up

- Check all safety-relevant components for function and wear
- Visual inspection of magnetic clamping plates for wear and surface excellence including scan for residual magnetism
- Check for magnetic clamping force by hydromechanical detaching device measuring protocol included
- Registration of the magnetic clamping system in the ROEMHELD Ω -data base for predictive wear detection
- Maintenance based on operating hours or cycles, at least once per year, exchange of all wear and tear parts included

Phone Support

- Extended on-call time of our customer service
- Daily from 07:30 to 23:00 (GET)

ROEMHELD Seminar

- Free participation in our annual seminars on magnetic clamping technology

ROEMHELD Service Portal

- Access to our service portal, which allows our experts to connect to you remotely, if necessary

ROEMHELD Spare Parts Guarantee

- Extended spare parts guarantee for ROEMHELD components

Availability Guarantee

- Free spare parts for your magnetic clamping system available within 24 h

Full Service

- Repairs, without exception carried out by ROEMHELD technicians, are included

	Top	Advanced	Basic
ROEMHELD Check-up	✓	✓	✓
Phone Support	✓	✓	✓
ROEMHELD Seminar	✓	✓	✓
ROEMHELD Service Portal	✓	✓	
ROEMHELD Spare Parts Guarantee	✓	✓	
Availability Guarantee	✓		
Full Service	✓		
	Price on request	Price on request	Price on request

Please contact us

E-mail: service@roemheld.de

Service hotline: +49 (0) 6405/89-400